

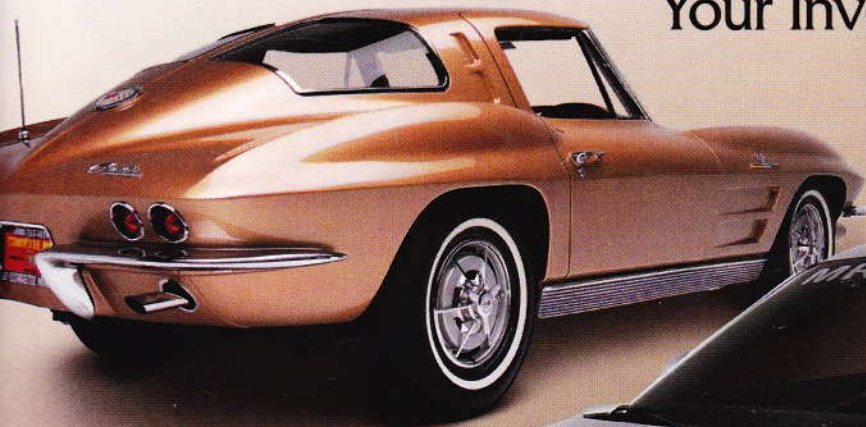
AMOS

AUTO

ENTHUSIAST

Silver or Gold? Metal or Glass?

The **Right Insurance** to Protect
Your Investment!



SPECIAL SECTIONS

CORVETTE & CHEVY

- Project 1967 Camaro
- '63-'82 Corvette chassis upgrade

MOPAR

- '09 Charger Bolt Ons
- EFI Conversions

MUSTANG

- Trans Am Tribute Pony
- Late Model Suspension Upgrades

CLASSICS

- Fixing a Vintage A/C
- 1930 Chrysler '77"

\$5.99
DISPLAY UNTIL 1 / 17 / 2011

JANUARY 2011
VOLUME 54, ISSUE 1



0 72246 46017 01 >

AN INSIDE JOB

THE ROUTE TO CHOOSE IF ORIGINALITY IS YOUR OBJECTIVE

STORY LARRY WEINER

WHEN RESTORING OR MAINTAINING A VINTAGE CAR, USING THE ORIGINAL PARTS IS OFTENTIMES THE MOST DESIRABLE.

But, with the passage of time and use, some of the parts will inevitably exhibit wear or damage. Among the most vulnerable are interior soft trim parts, such as the dash pad and door panels. Dash pads are

while it appears to have been well cared for its entire life, it still shows the normal wear and tear associated with a vehicle that is 43 years old. In particular, the dash pad had several cracks in just one area, as though

original parts with reproductions, we chose to save them and keep the interior of the Camaro as original as possible.

For the repair of the dash pad and door panel on the Camaro,

we hooked up with CC and Lesandre, better known as The Vinyl Ladies. Located in Southern California, the Vinyl Ladies have specialized in repairing damaged vinyl and leather interior surfaces on vehicles of all types for over 20 years.

Unlike taking a generic approach to repairs, the Vinyl Ladies have spent two decades developing unique custom-tailored processes for interior repairs and have even created their own brand of dyes, so that the surfaces can look like new

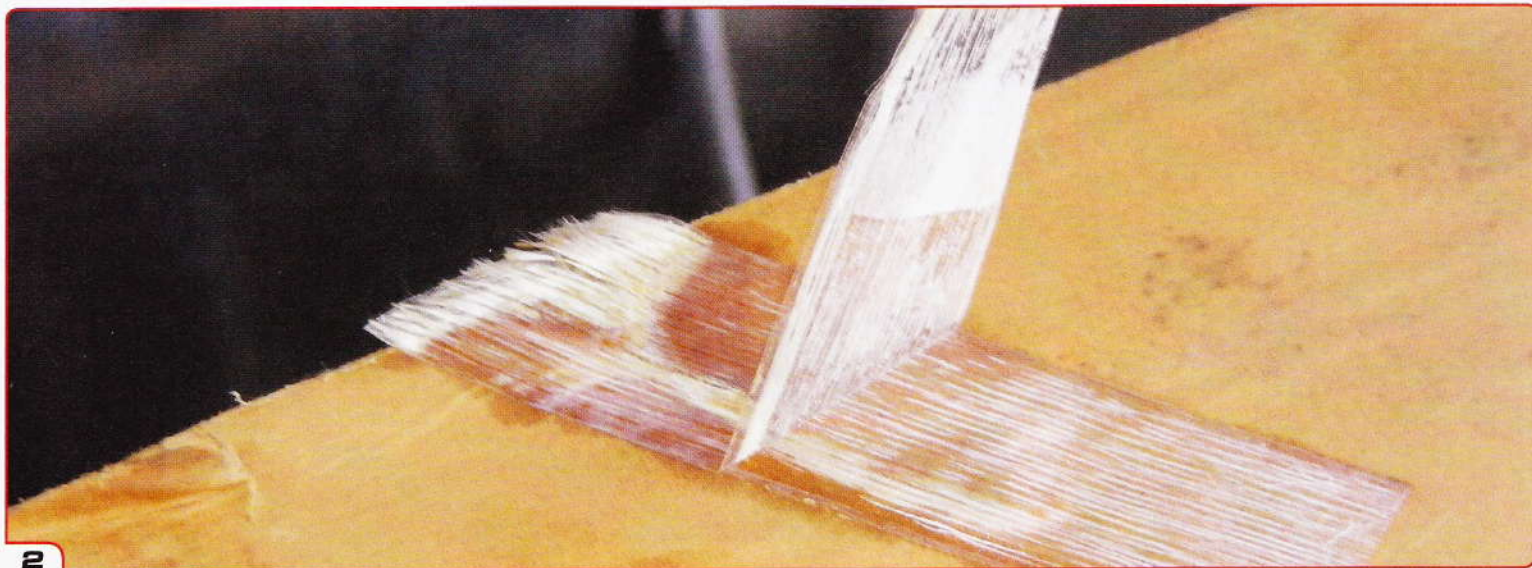


assaulted by the sun every time your vehicle is outside, while door panels can suffer a variety of abuses from being inadvertently scratched with fingernails, scuffed and sometimes, inadvertently kicked when you get out of the vehicle.

In the case of the 1967 Camaro RS SS that is the subject of this story,

someone had struck it with their hand in an effort to find a rattle in the dashboard, while the left front door panel had an odd vertical tear at the top, just beneath the stainless trim. Rather than replace these otherwise nearly perfect

once the repairs were completed. Follow along with us as The Vinyl Ladies repair the original Camaro dash pad and door panel.



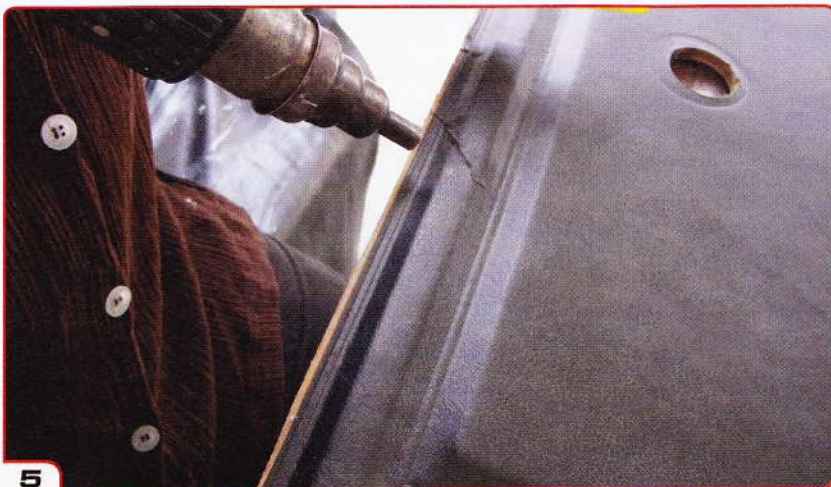
2



3



4



5



6

1 The original factory door panel has a tear. We could replace it or, in the interest of keeping it as original as possible, go the repair route.

2 We started by removing the door panel from the vehicle. We found evidence of a prior repair job. There was strapping tape on the door panel's cardboard backing.

To start our repair, we need to carefully remove that tape.

3 We applied fiberglass mesh to the repair for reinforcement of the area. Using a spatula, some five-minute epoxy is spread over the mesh.

4 Plastic & Emblem adhesive was used on

the door panel and the dash pad. (We will be tackling that a little later).

5 The Plastic & Emblem adhesive is applied and a heat gun is needed to speed up the curing of the adhesive.

6 We're using a grain pad to bring the surface quality to reality once the repair is done.



7 This is Vinyl & Leather Repair Compound, commonly used by those who want to repair interior components. The Vinyl & Leather compound has been applied and needs to be smoothed for a nice finish.

8 The heat gun is again used to cure the adhesive, then the grain pad is used to smooth, compress and re-create the grain pattern. The heat gun is then used to cure the total repair.

9 Here's a close up view of the repair.



10

10 Chip Guard is used to enhance further blending. We then used the Vinyl Ladies dye to get the color to match well.

11 The door panel looks like new and it's really not. It's over 40 years old, but the repair keeps it alive.

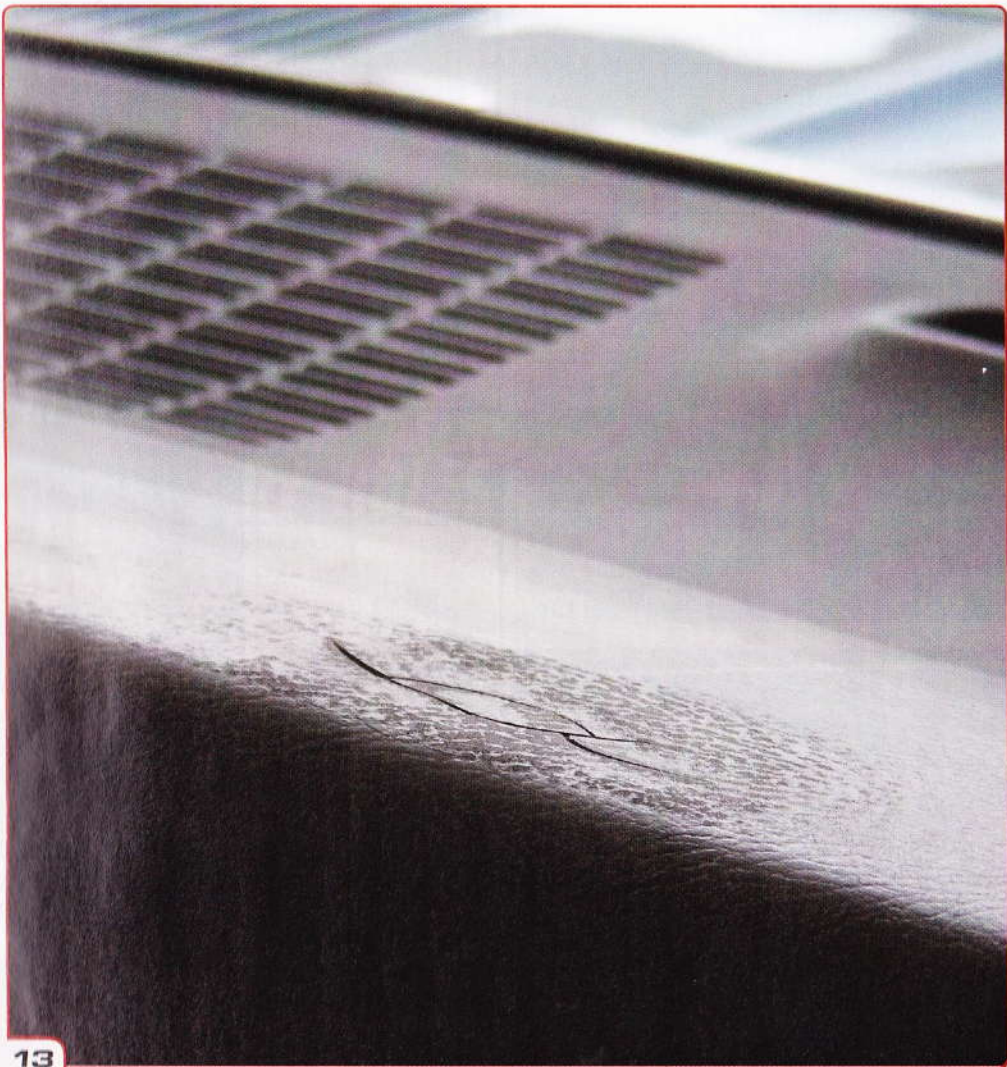
12 We start with the dash pad by pulling out the main pieces in the damaged area. The Plastic & Emblem adhesive is brought out and applied to the removed piece, using a spatula.



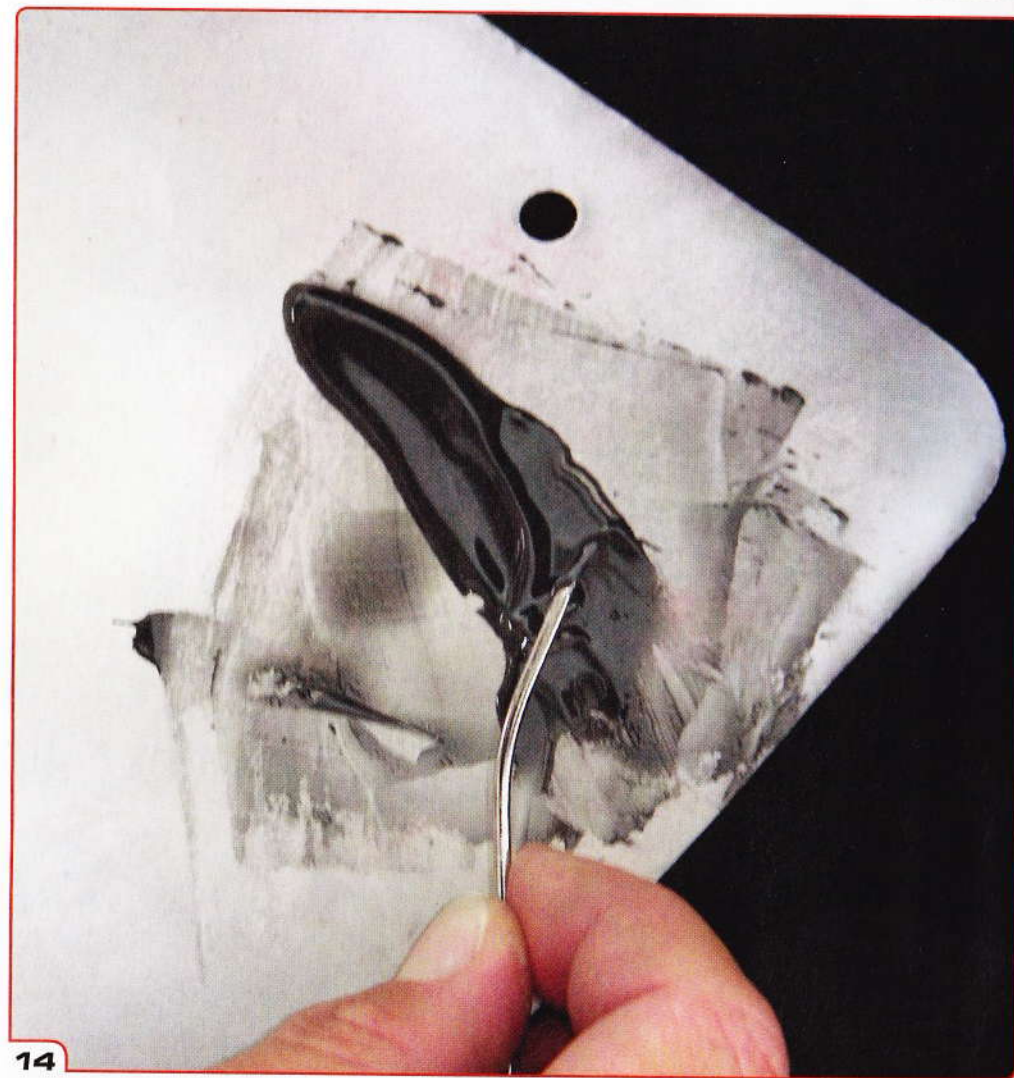
11



12

**13**

13 The damaged piece is replaced on the dash pad and we did some light sanding on the top surface of the dash pad.

**14**

14 We'll turn to the Flexible SEM Weld two-part repair product. We use it in 50-50 portions as per the instructions. The SEM Weld must be mixed before applying.



15

15 Once it has been mixed, the compound goes into the cracks, using a large needle for application. After that, you can lightly sand it again to see where you stand.



16

16 Quick Fix Adhesive becomes the next product to be applied. Using the large needle, put the Quick Fix into place.



17



18



19

THE VINYL LADIES

As mentioned in the story, The Vinyl Ladies use a specific approach to the repair of each part based on the type of vinyl or leather, grain type and color. You can have the Vinyl Ladies repair your interior parts even if you do not live in Southern California. Just ship them your damaged parts and they will fix and send them back to you, ready to install. In addition, they manufacture a comprehensive line of environmentally friendly dyes so that you can dye your interior, bringing it back to its original factory appearance.

FOR YOUR INFORMATION:

THE VINYL LADIES

(909) 867-4062

www.sterlingaccessories.com

Unleash your Chevy's
TRUE PERFORMANCE
Do What They Say Can't Be Done



Computer
Programmers
Gas & Diesel

- Predator
- Superchips
- Hypertec
- Jet
- Bully Dog



Fiberglass
Accessories

- Corvette Ground Effects
- Corvette Wings
- Camaro Ground Effects
- Camaro Wings
- Hoods - Hoods & Hoods for Camaros
- Corvettes



Vertical Doors

- Corvette 1968 to 2000
- Camaro 1967 to 2000
- Chevy & GMC Trucks & SUV's



Service & Restoration



ORDER ONLINE OR CALL

614-419-8794



(Hours: 8AM-5PM Eastern Time)

www.sterlingaccessories.com